

PORT JEFFERSON CROSSING APARTMENTS

December 13, 2022
Re: Port Jefferson Crossing

Dear Community Leader,

Would you like an opportunity to assist in helping people in need of finding decent, safe, and sanitary housing? **Port Jefferson Crossing** is a **family** community subsidized by HCR; we have **45** apartments available to eligible applicants/residents. This is a non-smoking community.

We will be holding a lottery on January 19, 2023 at 1615 Main Street, Port Jefferson, NY 11777. The application deadline to be considered for the lottery is end of business on January 9, 2023. All applications must be postmarked by January 9, 2023. Applications can be emailed to portjeffersoncrossing@coniferllc.com, mailed or submitted in person at:

Temporary Office: Before Lottery
56 Railroad Avenue, Suite B, Copiague, NY 11726

Port Jefferson Crossing: After Lottery
1615 Main Street
Port Jefferson, NY 11777

Port Jefferson will provide the following:

A minimum of **5** units will be fully accessible, adapted, and move-in ready, for persons who have a mobility impairment; and

A minimum of **2** units will be fully accessible, adapted, and move-in ready, for persons who have a hearing or vision impairment.

Although we advertise the availability of the apartments throughout the area, we take affirmative steps to assure that persons of all income ranges are advised of the availability of apartments in your area. Please bring this information to the attention of those persons associated with your organization who may be eligible for and interested in this housing.

Enclosed are copies of our application forms for your interested members/clients. You may wish to announce the availability of these apartments at gatherings of your group and if there are any questions, our phone number is **(631) 382-6725/TDD 1-800-662-1220**. On behalf of Conifer Realty LLC and, CDCLI I ask your assistance in spreading the word about this community. We encourage people to apply and have their names on the waitlist as apartments become available at unspecified times.

We provide telephonic interpreting services via a Language Access Line at our leasing office for persons with Limited English Proficiency and encourage persons with Limited English Proficiency to visit our website www.portjeffersoncrossing.com which can be translated into over one hundred languages.

In an effort to monitor our outreach efforts and to establish a community for persons of all abilities, we ask that you respond to us regarding the persons within your organization who may be interested.

a conifer community
www.portjeffersoncrossing.com
1615 MAIN STREET, PORT JEFFERSON, NY 11777

[E] portjeffersoncrossing@coniferllc.com [P] (631) 382-6725 [F] (631) 382-6726 [TTY] (800) 662-1220



Brand New

APPLY FOR OUR SPACIOUS 1 & 2 BEDROOM APARTMENTS



PORT JEFFERSON CROSSING

**APPLICATIONS MUST BE POSTMARKED BY
JANUARY 9, 2023 TO BE ENTERED INTO THE LOTTERY**

**LOTTERY TO BE HELD
JANUARY 19, 2023**

LOTTERY LOCATION: PORT JEFFERSON CROSSING

For applications, please visit www.portjeffersoncrossing.com

(4)	1 Bedrooms 30%	\$718
(29)	1 Bedrooms 60%	\$1,519
(4)	1 Bedrooms 95%	\$2,096
(1)	2 Bedrooms 30%	\$858
(6)	2 Bedrooms 60%	\$1,820
(1)	2 Bedrooms 95%	\$2,511

Mobility Impaired Adapted Units: (4) 1BR; (1) 2BR

Hearing Visually Impaired Units: (1) 1BR; (1) 2BR

INCOME LIMITS BASED ON HOUSEHOLD SIZE

Maximum Income Limits	30%AMI	60%AMI	95% AMI
1 Person:	\$30,540	\$61,080	\$97,375
2 People:	\$34,890	\$69,780	\$111,340
3 People:	\$39,240	\$78,480	\$125,210
4 People:	\$43,590	\$87,180	\$139,080

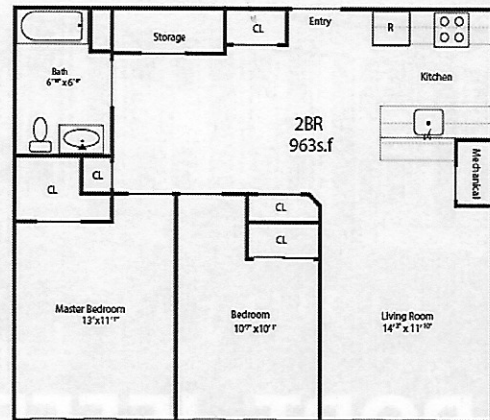
1615 Main Street, Port Jefferson, NY 11777

[E] portjeffersoncrossing@coniferllc.com [P] (631) 382-6725 [TTY] 1(800) 662-1220

TYPICAL 1 BEDROOM APT.



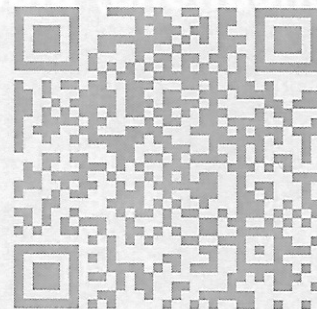
TYPICAL 2 BEDROOM APT.



Additional floor plans may be available. | Security deposit required. Income restrictions apply.

- Fully equipped kitchens w/Energy Star rated appliances & fixtures
- Spacious floor plans
- Elevator
- Central air
- Great Room
- Smart card laundry center
- Fitness room
- Controlled building access
- Small pets welcome restrictions apply
- Ample parking
- Smoke-free community
- Fully accessible & ADA compliant

**VISIT OUR WEBSITE ONLINE
TO BE ADDED TO OUR INTEREST
LIST FOR UPDATES**



WWW.PORTJEFFERSONCROSSING.COM